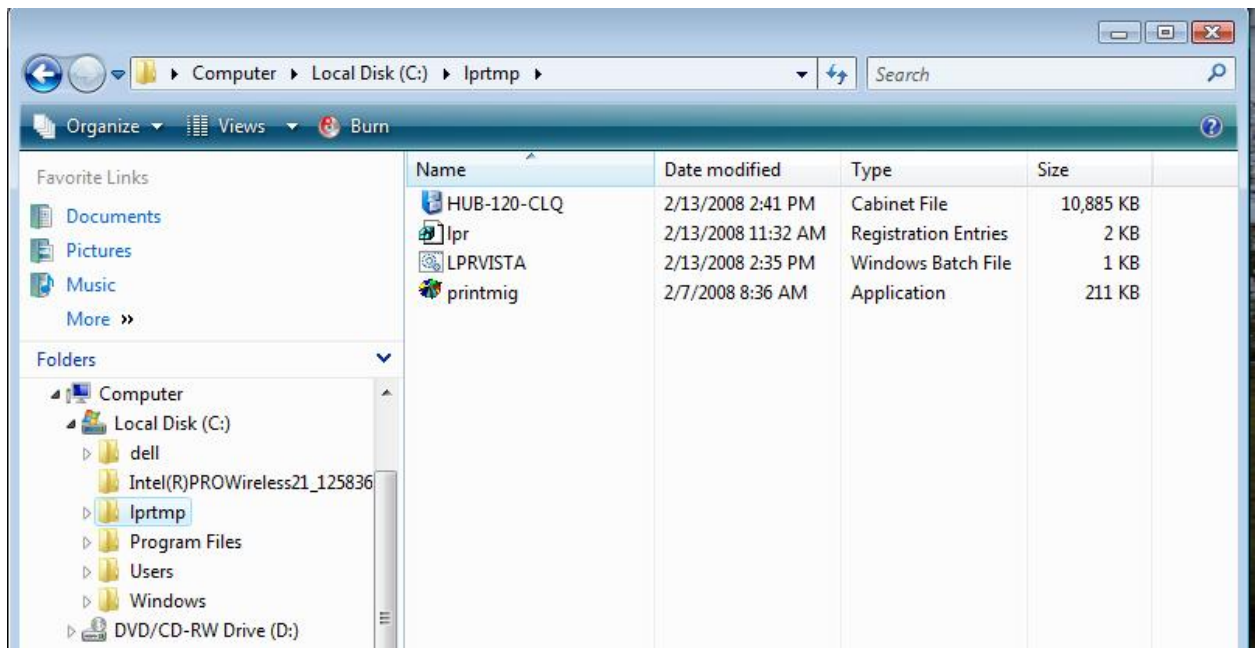
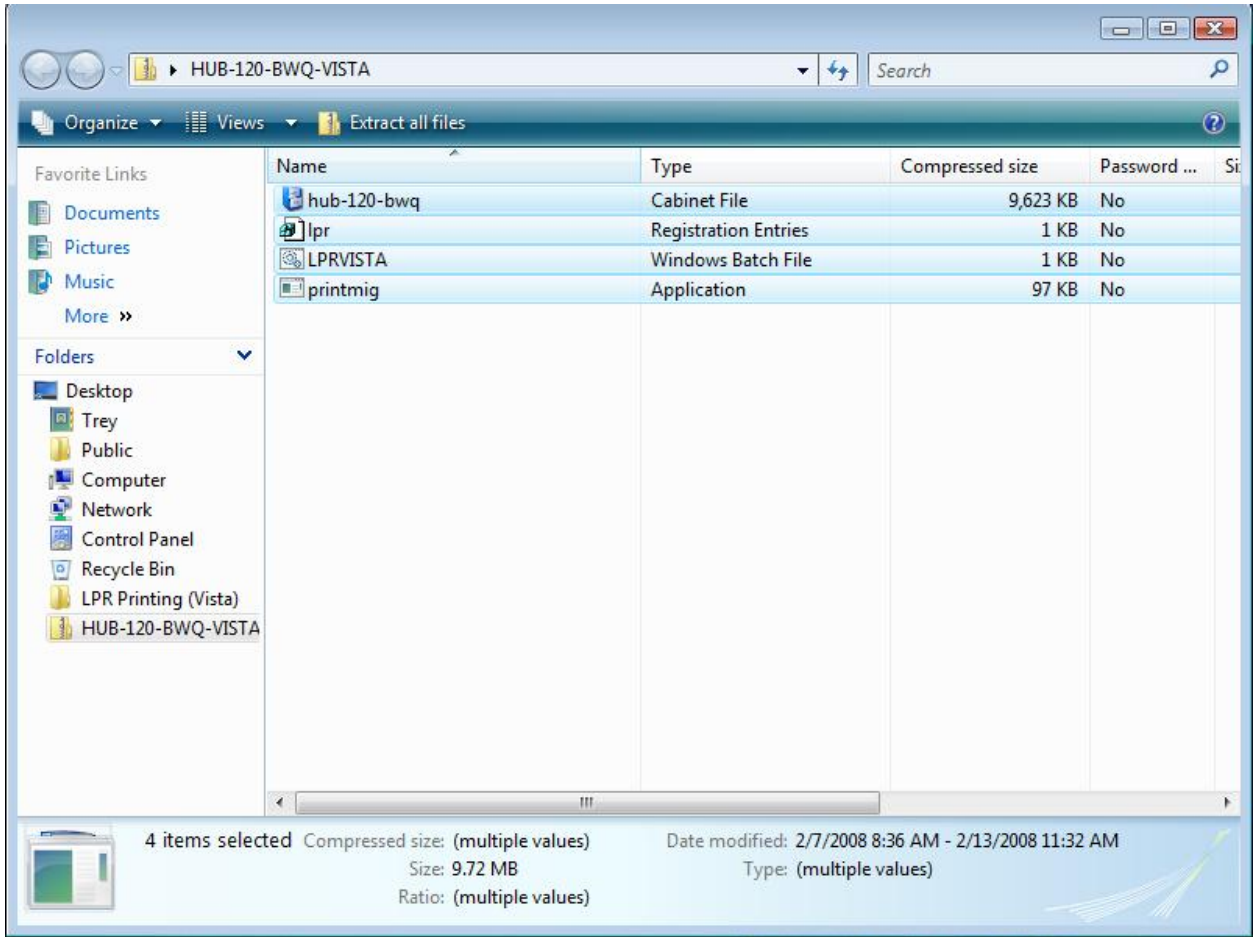


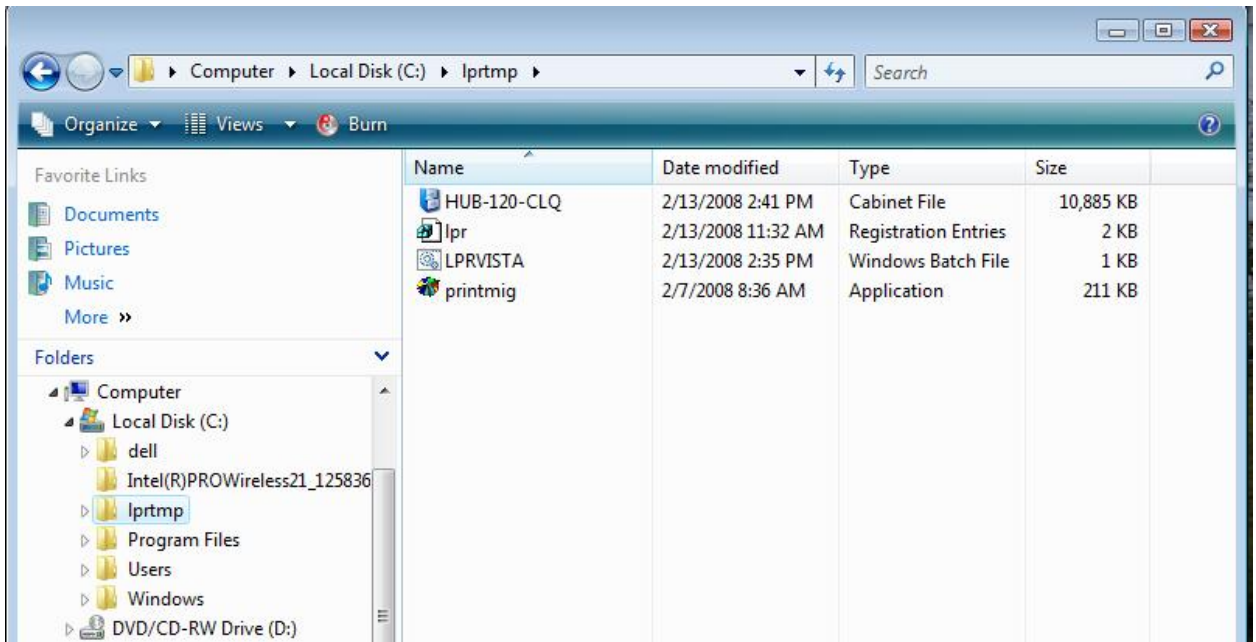
Adding CIRCA Lab Printers in Windows Vista

- 1) Use the links at http://labs.circa.ufl.edu/website/laptop_printing.php to download the setup file for your desired printer.
- 2) Once the download is complete, create a temporary folder located on your c:\ drive called "lprttmp" and unzip all four files into the newly created directory. It is important that these files be in this specific directory or the install will not function correctly.

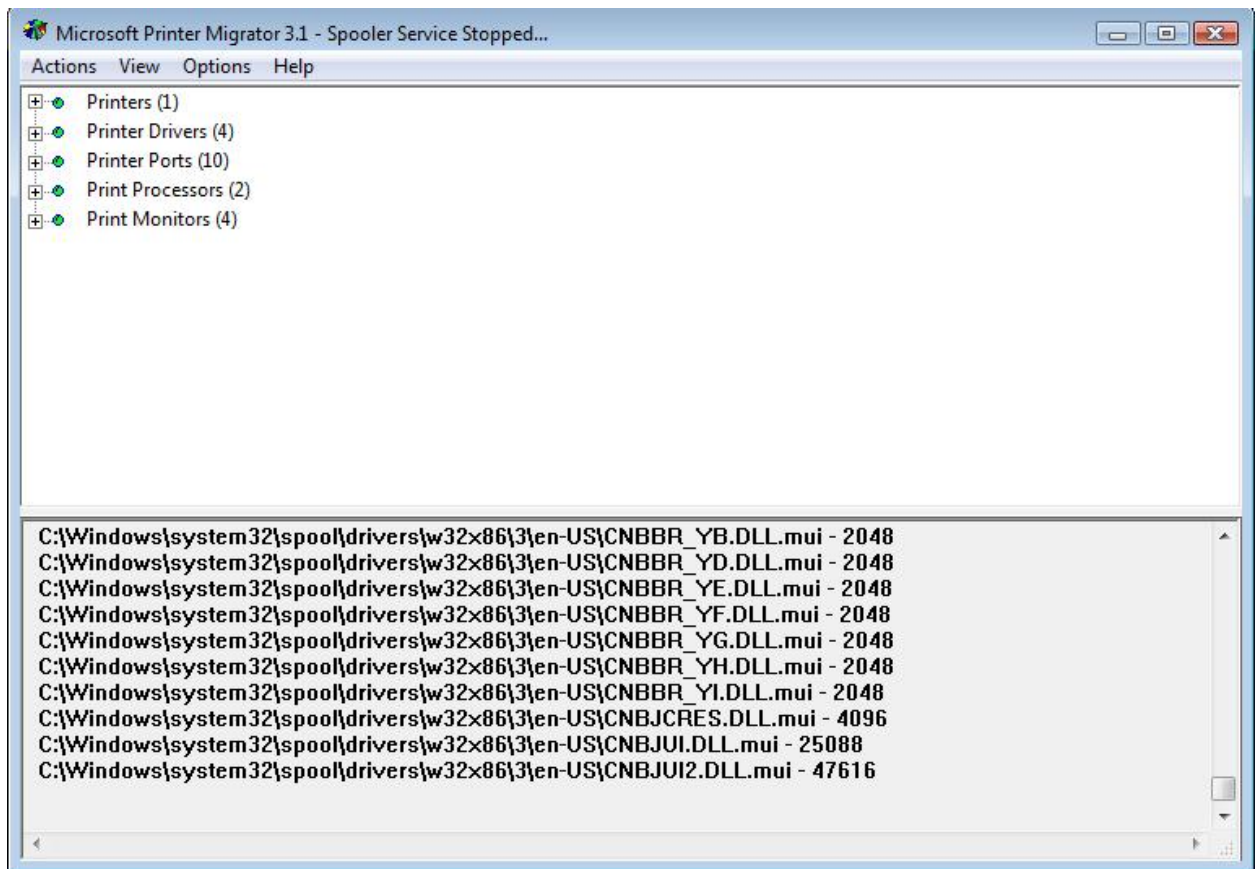




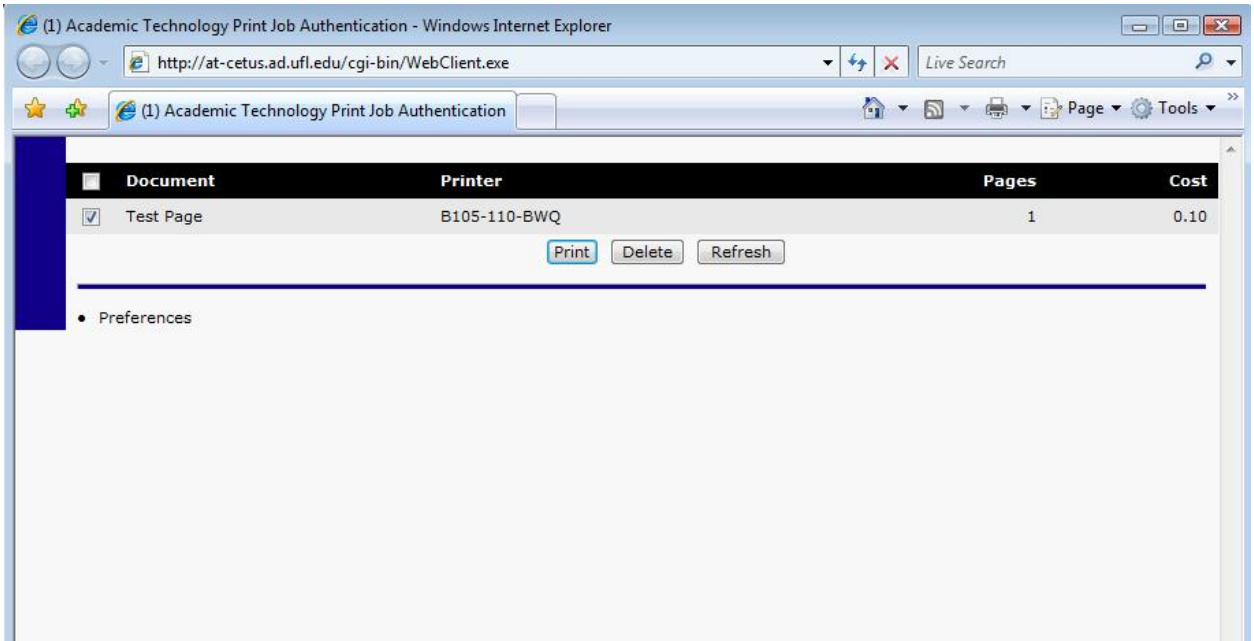
3) Open the “**lprtmp**” folder, located on your C: Drive and run the batch file called “**LPRVISTA**”



- 4) Microsoft Print Migrator will now run and install the printer for you.



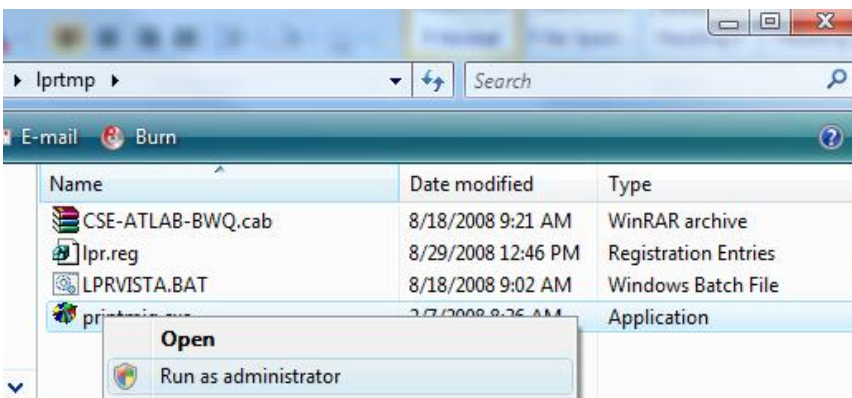
- 5) When Microsoft Print Migrator closes, your printer is installed and ready to print. You can see this by clicking **Start > Control Panel > Printer (located under the Hardware and Sound selection)**.
- 6) Once you have printed your document, you will need to log onto **at-cetus.ad.ufl.edu** or **at-regulus.ad.ufl.edu**. This will associate the document to your **GatorLink** account.



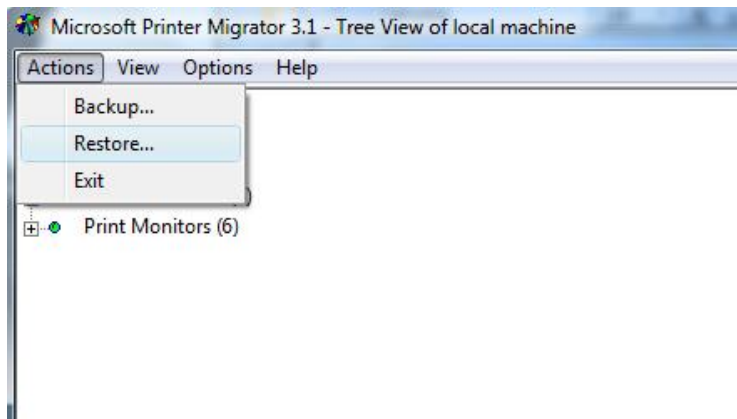
- 7) Once you log in, select the print job to associate and click print. This will send the job to the Print Release Station located next to the printer.
- 8) Go to the Print Release Station and release your print job. If you have any problems or questions, please find the closest CIRCA Technology Consultant in a blue vest or call 392-2428.

Troubleshooting:

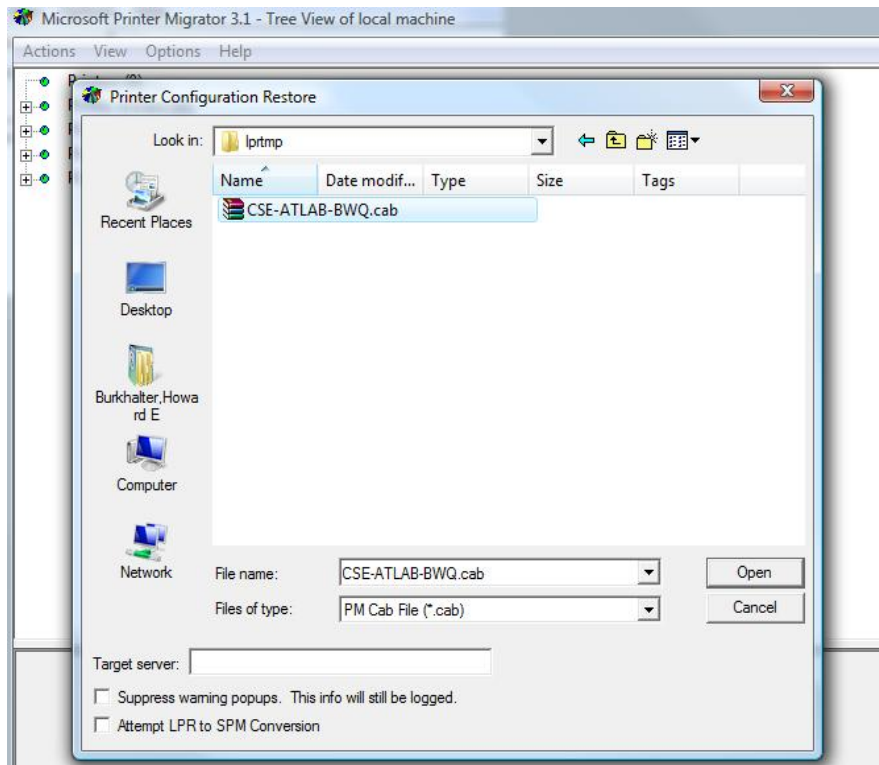
If Print Migrator appears and then disappears without running, Windows security settings are, inhibiting it from running. To resolve the issue: right-click on the "printmig.exe" and select "Run as Administrator."



Click on **Actions** and then **Restore**



Select the cab file, located in the same directory as the Print Migrator executable.



Migrator will run and then your printer will be installed. You can then return to step 5 above.